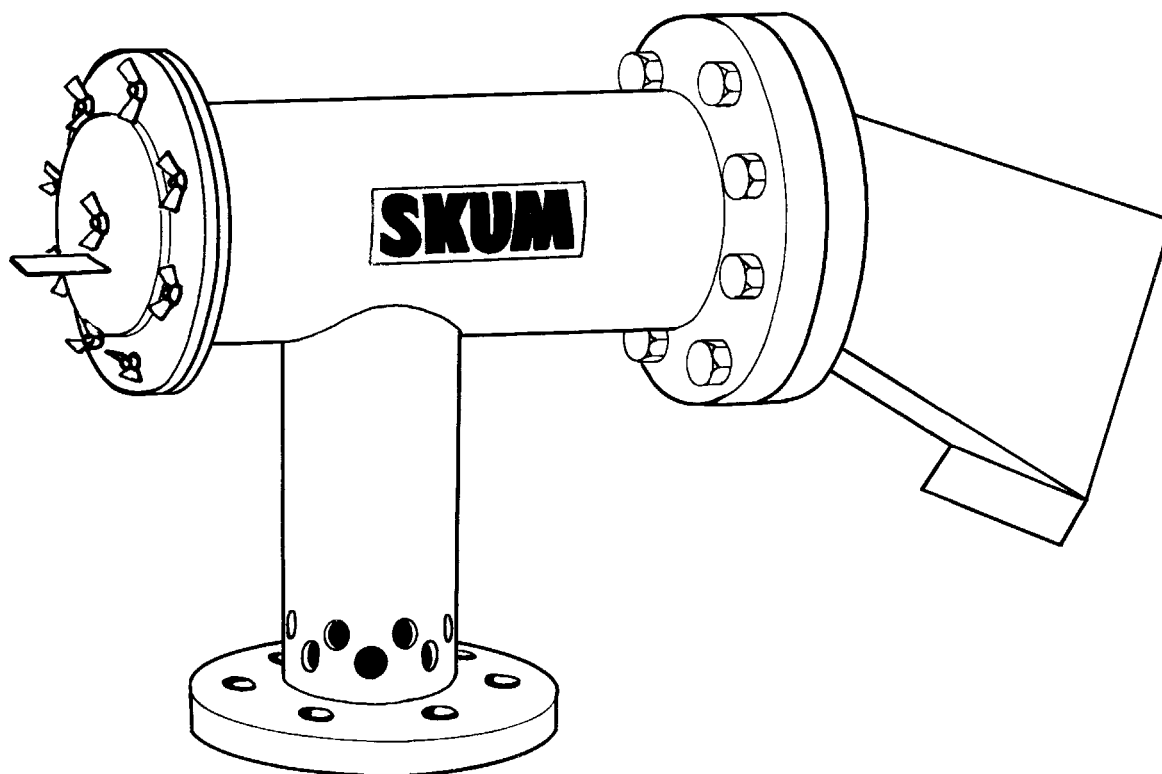


**OFG-50**  
**OFG-100**



## Description

The over-the-top foam generator (OFG) is designed to produce and inject foam into flammable liquid storage tanks above the liquid surface. It is welded from the outside into the tank wall at the top of the tank.

The OFG is connected to a foam solution supply system and equipped with a test outlet, that makes it possible, by simply moving a test cover (see drawing overleaf), to test the unit without putting foam into the tank.

The OFG can be used both for tanks with fixed and/or floating roof.

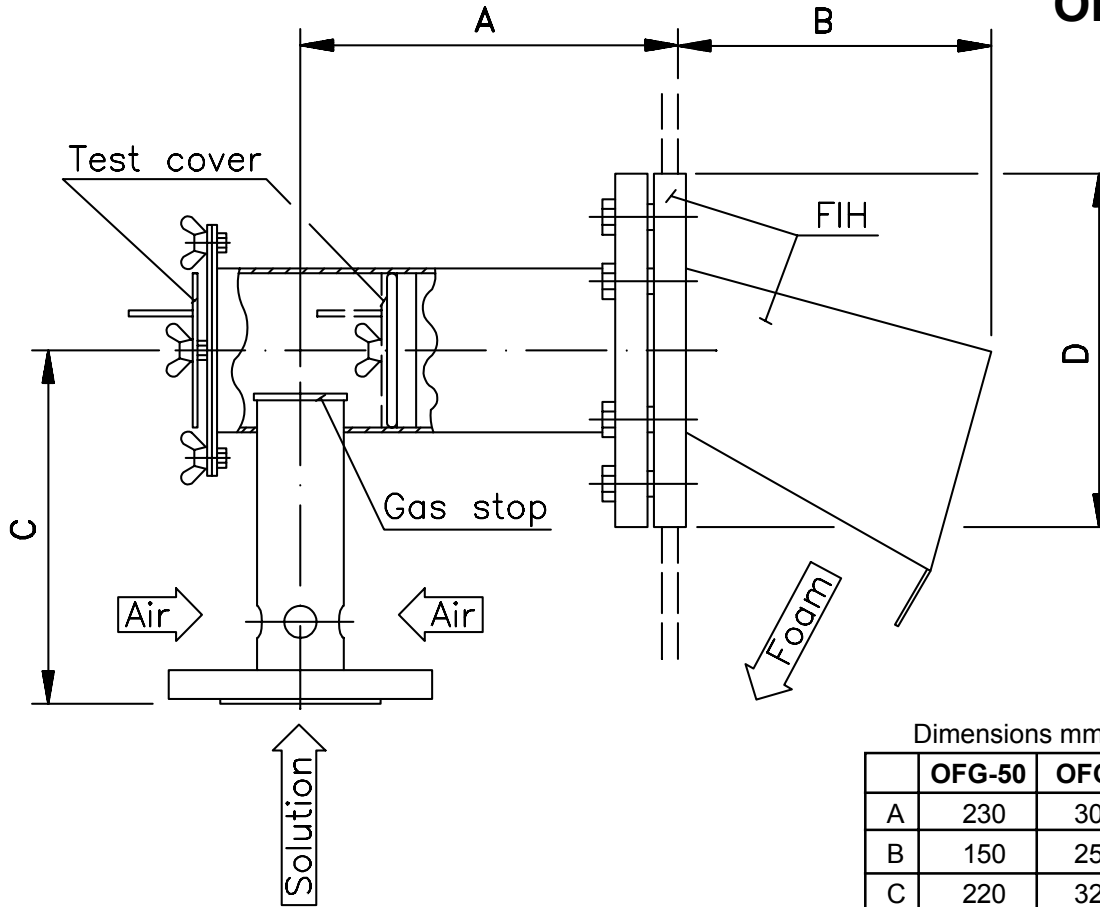
When it is used in a tank with fixed roof, a gas stop valve is mounted in the OFG to prevent gas from leaking out in the air. To choose numbers and capacities of OFG's for a specific tank, please refer to National Fire Protection Association: National Fire Codes NFPA 11, and/or local regulations.

The OFG is calibrated to customers flow and pressure requirements within its minimum and maximum limits.



**Dimensions**

**OFG-50**  
**OFG-100**



Dimensions mm

	OFG-50	OFG-100
A	230	300
B	150	250
C	220	320
D	220	286

**Performance data**

**1 bar = 0,1 MPa = 14,5 psi**

	OFG-50	OFG-100
Solution capacity:	Up to 700 l/min Up to 185 USGPM	700-3000 l/min 185-792 USGPM
Weight:	20 kg/44 lbs	32 kg/71 lbs
Connection: OFG	50 Din PN 16 or 2" ANSI 150 lbs	100 Din PN 16 or 4" ANSI 150 lbs
FIH	100 DIN PN 16	150 DIN PN 16 To fit 6"ANSI 150 lbs
Expansion ratio:	Up to 1:4*	
Material: OFG	Body: Stainless steel Internals: Bronze/Stainless steel	
FIH	Flange: Steel/galv.	
Working pressure range:	4-16 bar/58-232 psi	

\* Depending on foam concentrate type.



Technical changes reserved without notice