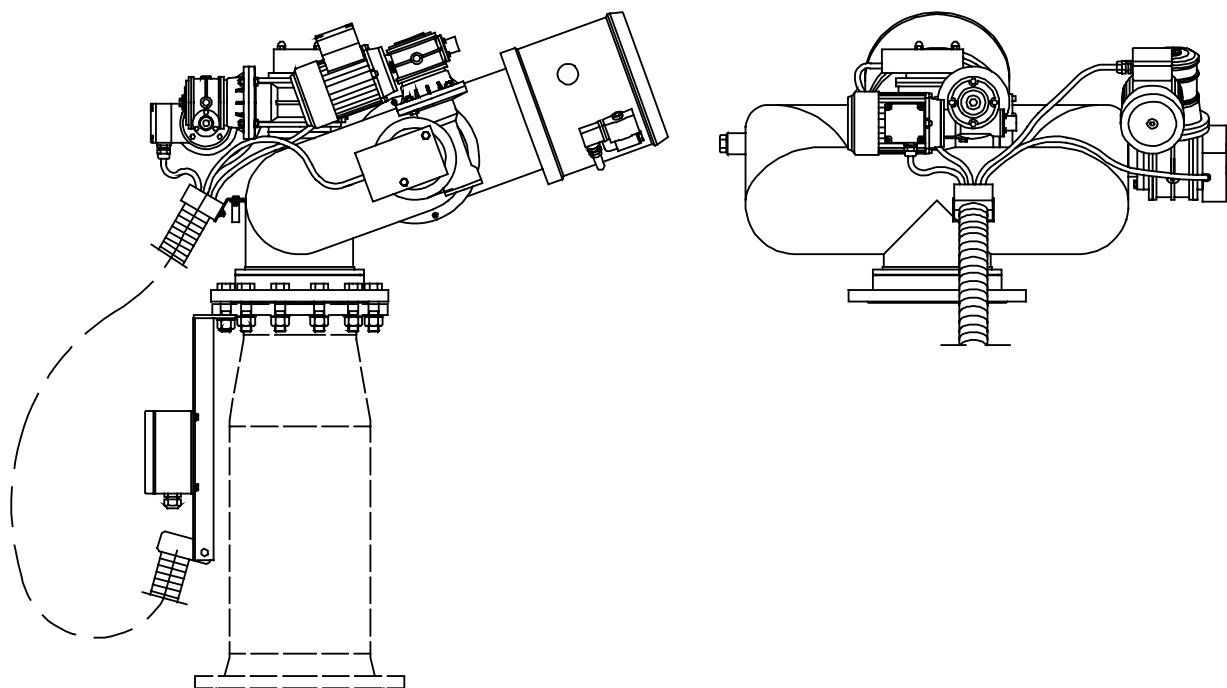


REMOTE-CONTROLLED FOG/JET MONITOR

01/08

1011/141

FJM-200/K EL/MV



Description

The electric remote controlled fog/jet fire monitor FJM-200/K EL/MV is a powerful unit with exceptional good throw characteristics. It is designed for an optimized delivery of water or foam in a solid jet as well as in a spray pattern.

The monitor has individual motors, with a small power consumption, for each movement, and is of low weight due to its welded stainless steel construction.

Installation of the unit is easily performed, by mounting the monitor to a pipe flange, and connecting two cables.

The required force for the vertical and horizontal movements is minimized due to the ball bearings.

The Skum monitors demand a minimum of maintenance since high class materials are used throughout the whole construction.



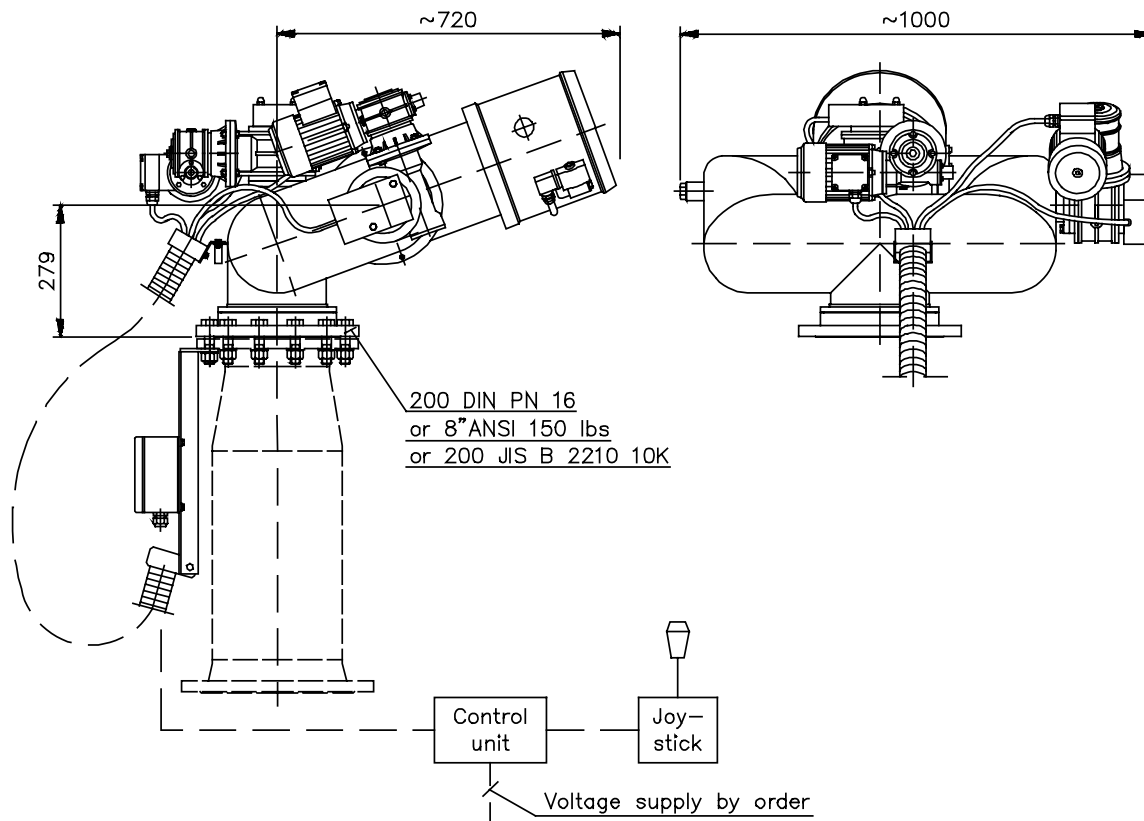
REMOTE-CONTROLLED FOG/JET MONITOR

01/08

1011/141

Dimensions

FJM-200/K EL/MV



Performance data

1 bar = 0,1 MPa = 14,5 psi

The nozzle can easily be adjusted for any specified capacity and pressure within its working range, according to separate adjustment table.

Operation:	Remote controlled and manual override
Water capacity:	20000 l/min (nominal) (FiFi I requirements = 20000 l/min.)
Max working pressure:	16 bar/232 psi
Rotation:	± 165 degrees
Elevation:	-60 to +70 degrees
Inlet connection:	200 DIN PN 16 or 8" ANSI 150 lbs or 200 JIS B 2210 10 K
Material:	Stainless steel and bronze
Surface treatment:	Primer and red 2-component paint
Weight, approx:	125 kg/276 lbs
Nozzle adjustable:	From jet to fog

Ball bearings for rotation and elevation.

El. gear motors, limit switches, terminal box, control unit and joy-stick included.* Standpipe optional.

*As standard, unless otherwise specified. Option: Manual override, EEx(e) or EEx(d) equipment.



Technical changes reserved without notice

Svenska Skum AB Tel: +46 303 57700
Box 674 Fax: +46 303 58200
SE-442 18 Kungälv e-mail: info@skum.com
Sweden Internet: www.skum.com

Svenska Skum B.V Tel: +31 71 5419415
P.O. Box 2061 Fax: +31 71 5417330
NL-2301 CB LEIDEN e-mail: info@skum.nl
The Netherlands Internet: www.skum.com