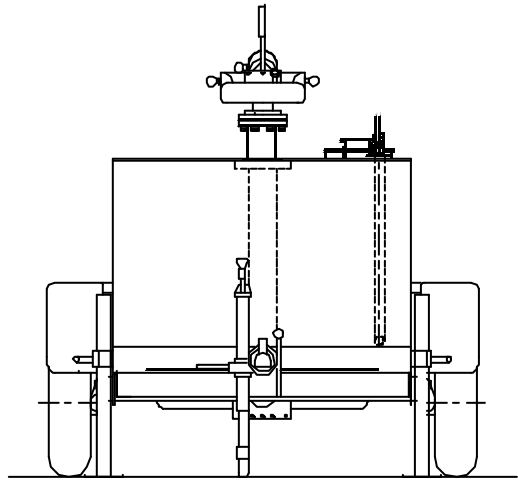
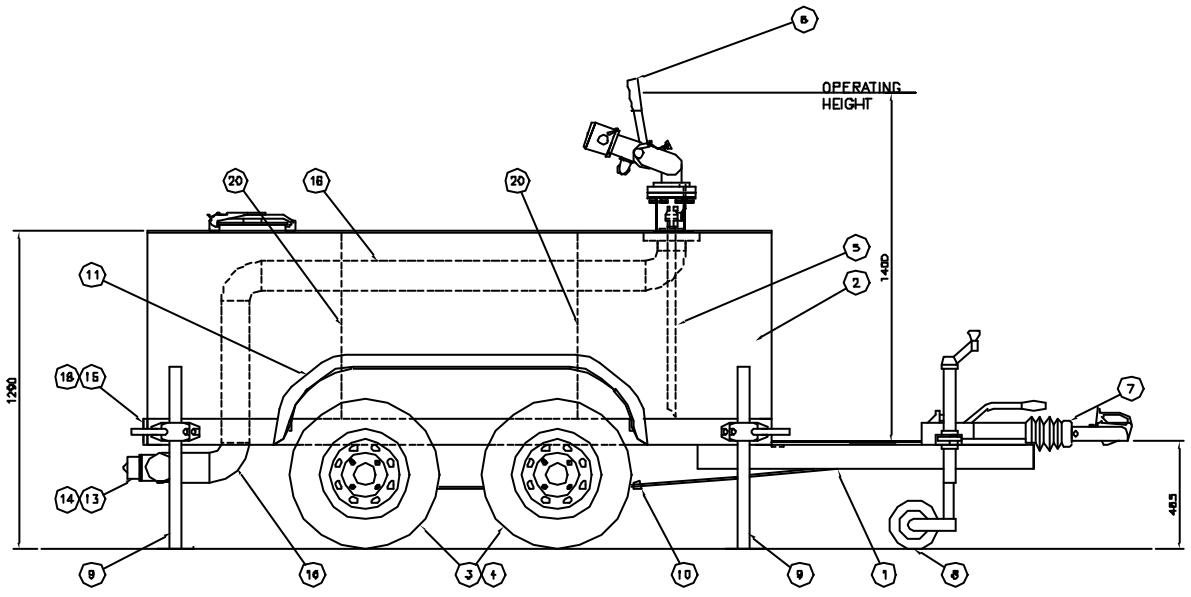


ITEM No.	PART No.	DESCRIPTION	No. OFF
1	F1877	TRAILER CHASSIS	1
2	-	FOAM TANK ASSEMBLY	1
3	F3041	FULL TRACK AXLE BEAM (SUPERDIE)	2
4	F3048	13" WHEEL c/w 18SP 13x8 PLY TYRE	4
5	-	STAINLESS STEEL DIP-TUBE ASSEMBLY	1
6	-	FOG/JET MONITOR (BVENSKA SKUM FJM-80 B)	1
7	F3042	TOWING COUPLING HYDRAULICALLY DAMPENED	1
8	F3043	ADJUSTABLE JOCKEY WHEEL (3000 KG CAPACITY)	1
9	F3044	ADJUSTABLE PROP-STAND c/w CLAMP	4
10	F3047	CABLE COMPENSATOR/BRAKE KIT	1
11	-	MUDGUARD ASSEMBLY	2
12	F3050	10" AUTO VENTING QUICK RELEASE LID	1
13	12484	2-1/2" MALE INSTANTANEOUS COUPLING c/w CHECK VALVE	4
14	F2160	2-1/2" RUBBER DUST-CAP c/w FIXING CHAIN	4
16	F3046	REAR LIGHT UNIT	1
16	-	4" MONITOR SUPPLY PIPE	1
17	F3082	NON-SLIP DECK PLATE (CHEQUER PLATE)	1
18	-	NUMBER PLATE LIGHT	1
19	-	1" GATE VALVE	1
20	-	ANTI-SURGE BAFFLE PLATE	2



TOLERANCES
 Ø DIMEN. PLACES ±0.10
 1 DIMEN. PLACES ±0.05
 ANGLES ±5min
 EXCEPT AS SHOWN

CONVENTIONS
 DIMENSIONAL DIMENSIONS WHICH MUST BE COORDINATE WITH THE OTHER

— — — — —
 — — — — —
 — — — — —

MATERIAL
 SEE TECHNICAL SPECIFICATION

SPECIFICATION
 SEE TECHNICAL SPECIFICATION

FINISH
 SEE TECHNICAL SPECIFICATION

NOTES

1. DIMENSIONS IN MILLIMETRES EXCEPT AS STATED.
2. UNLADEN WEIGHT IS ESTIMATED AT 900 KG.
3. LADEN WEIGHT IS ESTIMATED AT 3000 KG. BASED ON 1800 LITRES OF FOAM.

SK
BVENSKA SKUM AB

1	JH	4/17/01	ISSUE		
ISSUE	BY	DATE	REVISION	APP'D	

THIS DRAWING IS DESIGN AND DETAIL IN OUR PROPERTY AND MUST NOT BE USED EXCEPT IN CONNECTION WITH OUR BUSINESS. ALL RIGHTS OF DESIGN AND OR INVENTION ARE RESERVED.

**1800 LITRE
FOAM TRAILER
WITH FOG/JET MONITOR**

DRWG. No.	F5832	SHEET	1 OF 1
-----------	-------	-------	--------